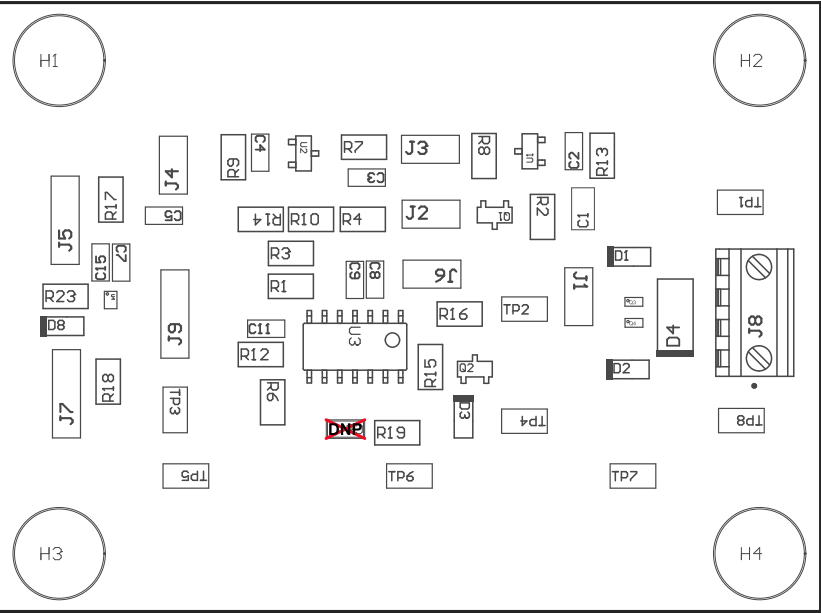


- Z21 ☐ These assemblies are ESD sensitive, ESD precautions shall be observed.
- Z22 ☐ These assemblies must be clean and free from flux and all contaminants. Use of no clean flux is not acceptable.
- Z23 ☐ These assemblies must comply with workmanship standards IPC-A-610 Class 2, unless otherwise specified.



~~DNP~~ ~~DNP~~ ~~DNP~~ ~~DNP~~ ~~DNP~~ ~~DNP~~ ~~DNP~~

COMPONENTS MARKED 'DNP' SHOULD NOT BE POPULATED.
ASSEMBLY VARIANT: 001

PCB VIEWED FROM TOP SIDE	BOARD #: ISBA-EVM-01064	REV: Rev A	SUN REV: Not In VersionControl
	TID #: TIDA-01064		
PLOT NAME = Top Assembly Drawing	GENERATED : 8/25/2016 4:39:19 PM		TEXAS INSTRUMENTS



COMPONENTS MARKED 'DNP' SHOULD NOT BE POPULATED.
ASSEMBLY VARIANT: 001

PCB VIEWED FROM BOTTOM SIDE	BOARD #: ISBA-EVM-01064	REV: Rev A	SUN REV: Not In VersionControl
	TID #: TIDA-01064		
PLOT NAME = Bottom Assembly Drawing	GENERATED : 8/25/2016 4:39:20 PM		TEXAS INSTRUMENTS